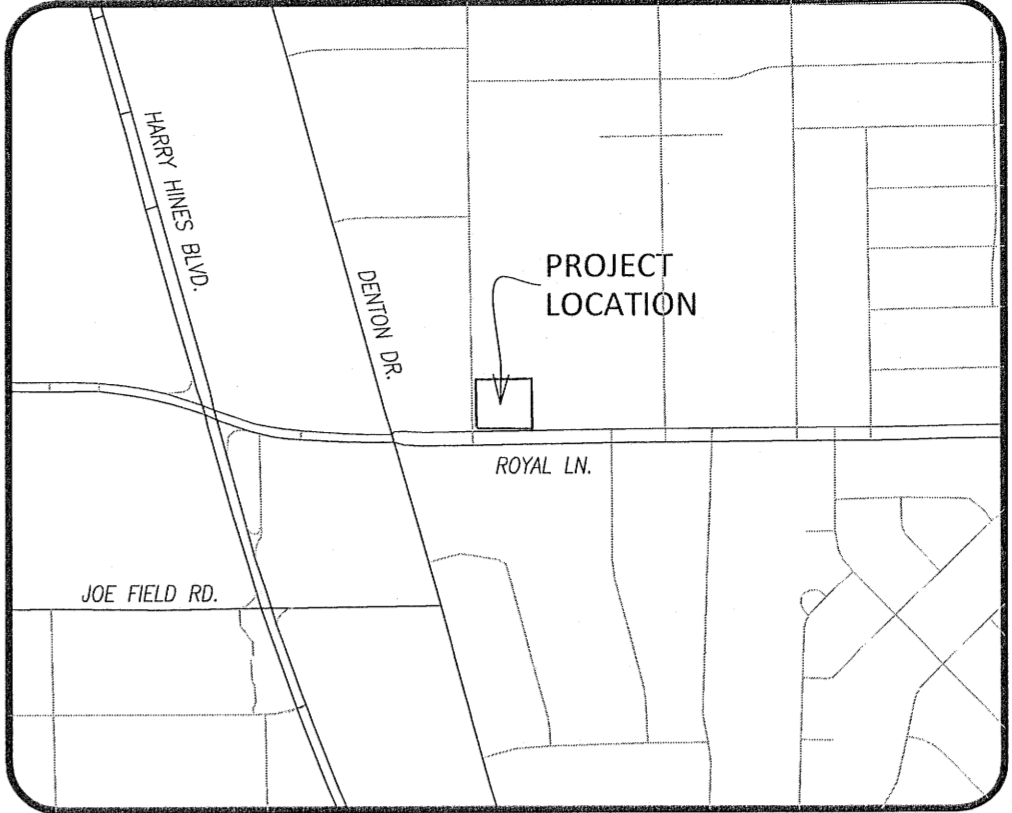


ASAM Development, LLC
Inst. No. 201300017091 OPRDCT

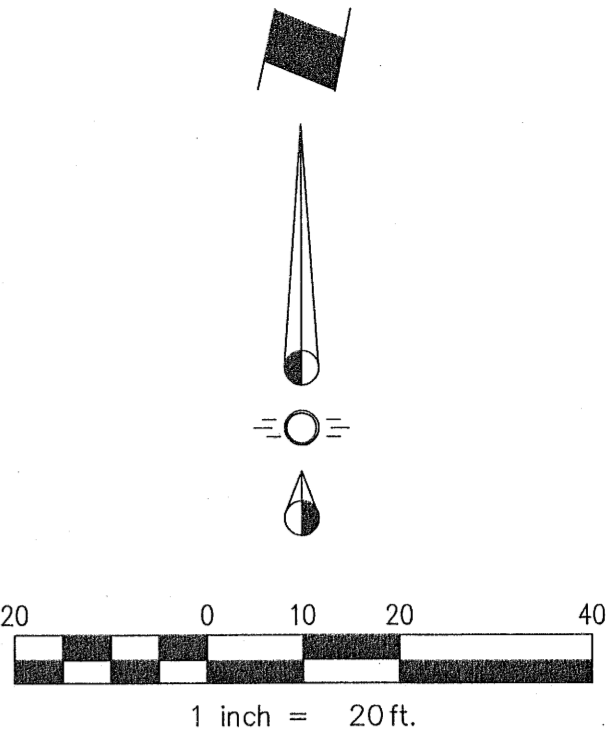
New World Jewelry, Inc.
Vol. 99025, Pg. 2075 DRDCT

New World Trade Center I, Ltd.
Vol. 2005063, Pg. 8515 DRDCT

New World Trade Center I, Ltd.
Vol. 2005063, Pg. 8515 DRDCT



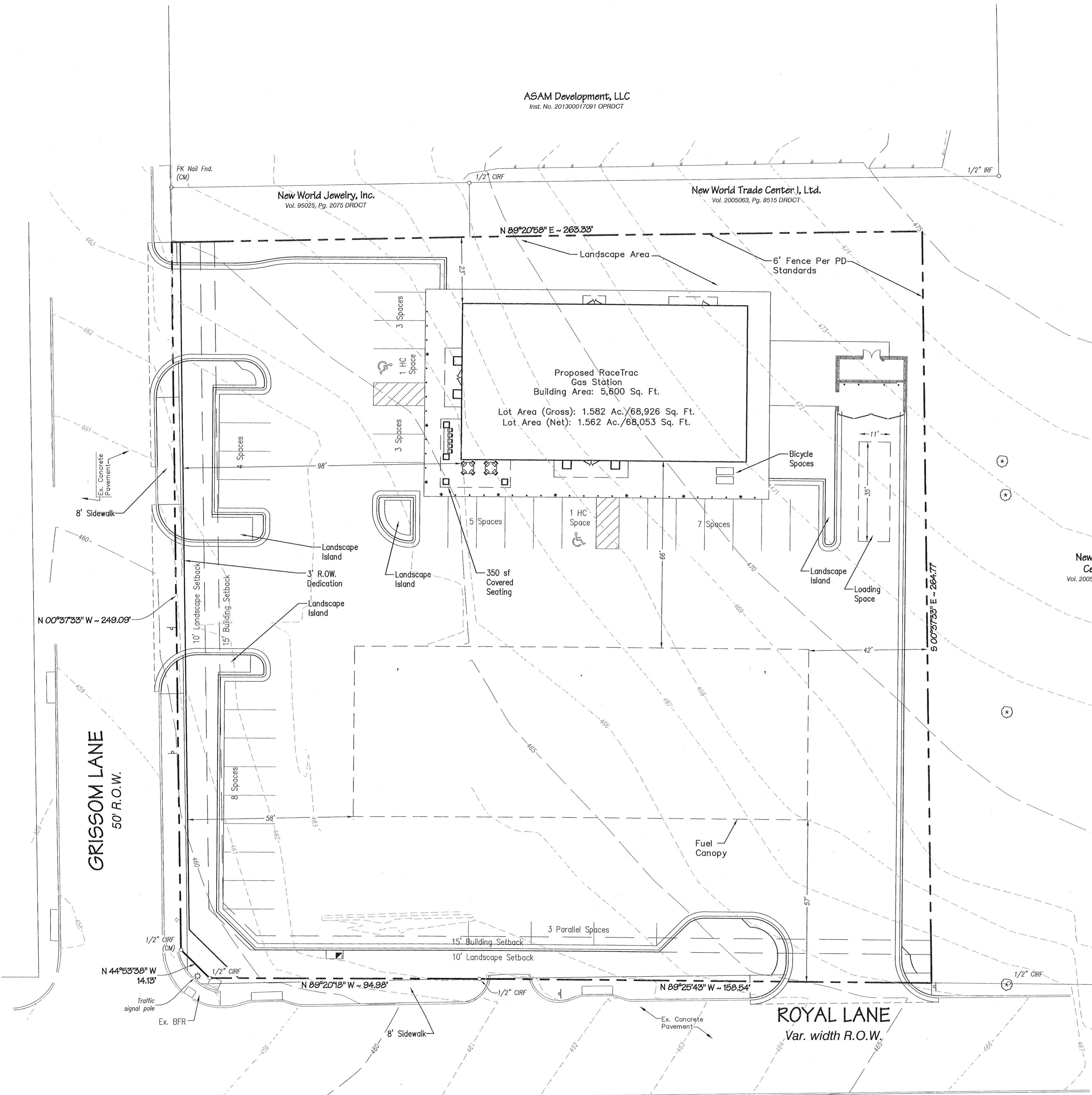
LOCATION MAP
1" = 1000'



ROYAL RACETRAC ADDITION—LOT 1, BLOCK B/5403

1,582 Acres in City Blocks B/5403 and out of the Franklin Bowles Survey, Abstract No. 69

Total Land Area	1,582 Ac. (68,926 Sq. Ft.) (Gross)
Total Building Area	1,562 Ac. (68,053 Sq. Ft.) (Net)
LOT COVERAGE REQUIREMENTS	
Total Land Area	1,582 Ac. 68,926 Sq. Ft.
Maximum Lot Coverage Allowed	85%
Lot Coverage Proposed	8.70%
PARKING	
HC Parking Required	2
Total HC Parking Proposed	2 (incl. 1 Van Space)
Parking Required (1 Sp/200 S.F. Bldg. + 2 (fuel sales) + 1 Sp/100S.F. Outdoor Seating)	= 34 Spaces
Total Parking Proposed	35 Spaces (incl. 2 HC Spaces)
BUILDING HEIGHT	
Maximum Building Height Allowed	27'-0"
Building Height Proposed	27'-0"
IMPERVIOUS COVERAGE	
Impervious Coverage Provided	54,477 Sq. Ft.



DEVELOPMENT PLAN
ROYAL RACETRAC ADDITION

PROPOSED LOT 1, BLOCK B/5403
1.582 Acres (Gross)
1.562 Acres (Net)

FRANKLIN BOWLES SURVEY, ABST. 69
IN THE CITY OF DALLAS, DALLAS COUNTY, TEXAS

OWNER
RaceTrac Petroleum, Inc.
3225 Cumberland Blvd., Suite 100
Atlanta, GA 30339
Telephone (770) 431-7600
Contact: Samie Abdulhafiz

ENGINEER / SURVEYOR
Spiars Engineering, Inc.
765 Custer Road, Suite 100
Plano, TX 75075
Telephone: (972) 422-0077
TBPE No. F-2121
Contact: Kevin Wier